

MSA 770, MSA 870

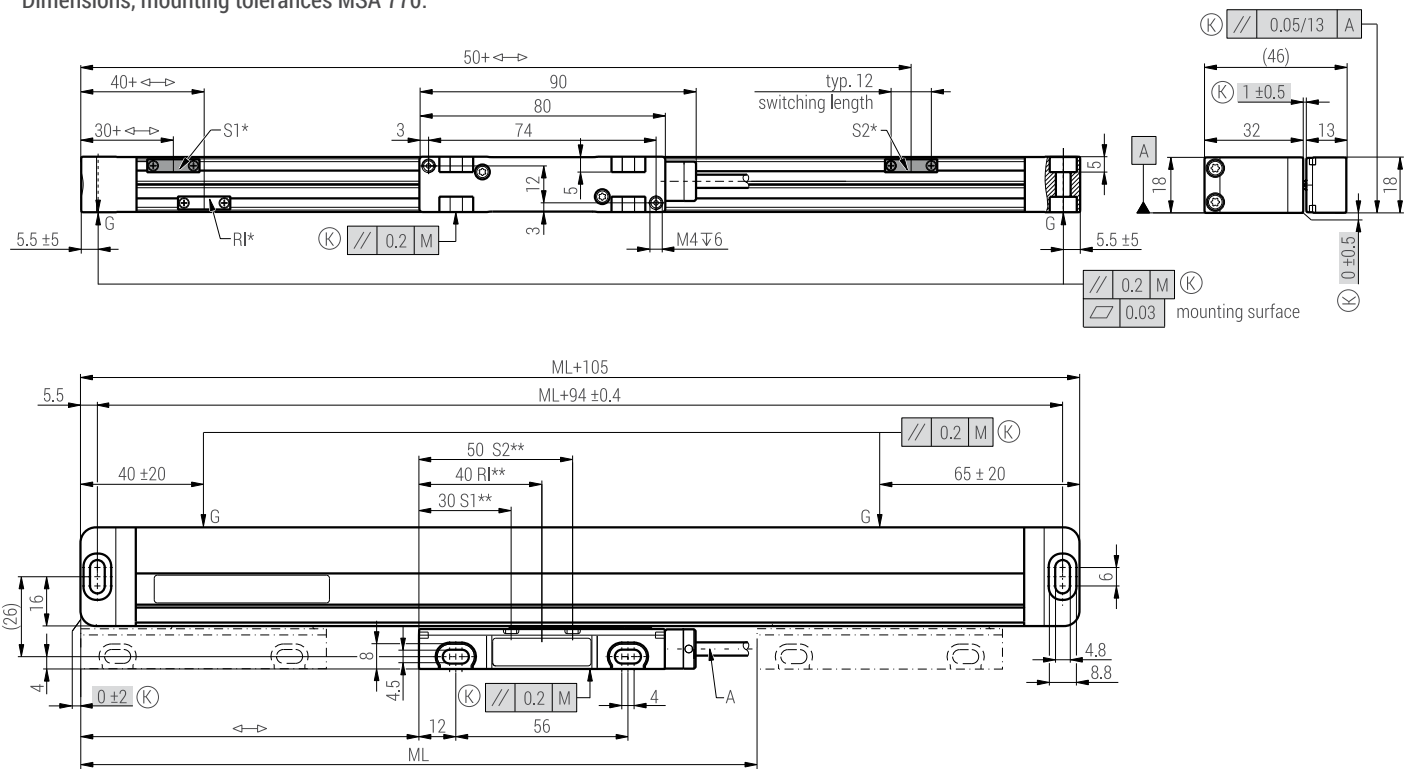
MSA 770



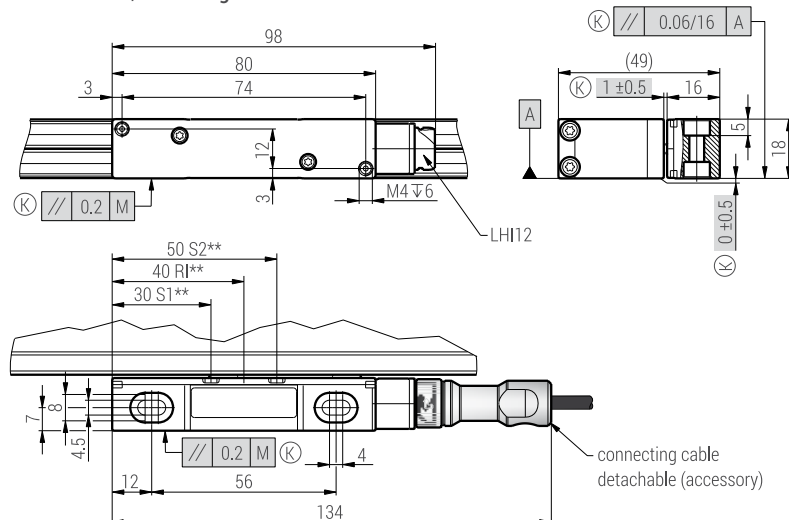
MSA 870



Dimensions, mounting tolerances MSA 770:



Dimensions, mounting tolerances MSA 870:



- M = machine guideway
- ML = measuring length
- G = gauging points
- ↔ = 0 ... ML
- A = cable

LHI12 = male connector

(K) = required mating dimensions

OPTIONAL:

S1, S2 = switch signals

RI = selectable reference mark

* = actuator magnet

** = sensor position